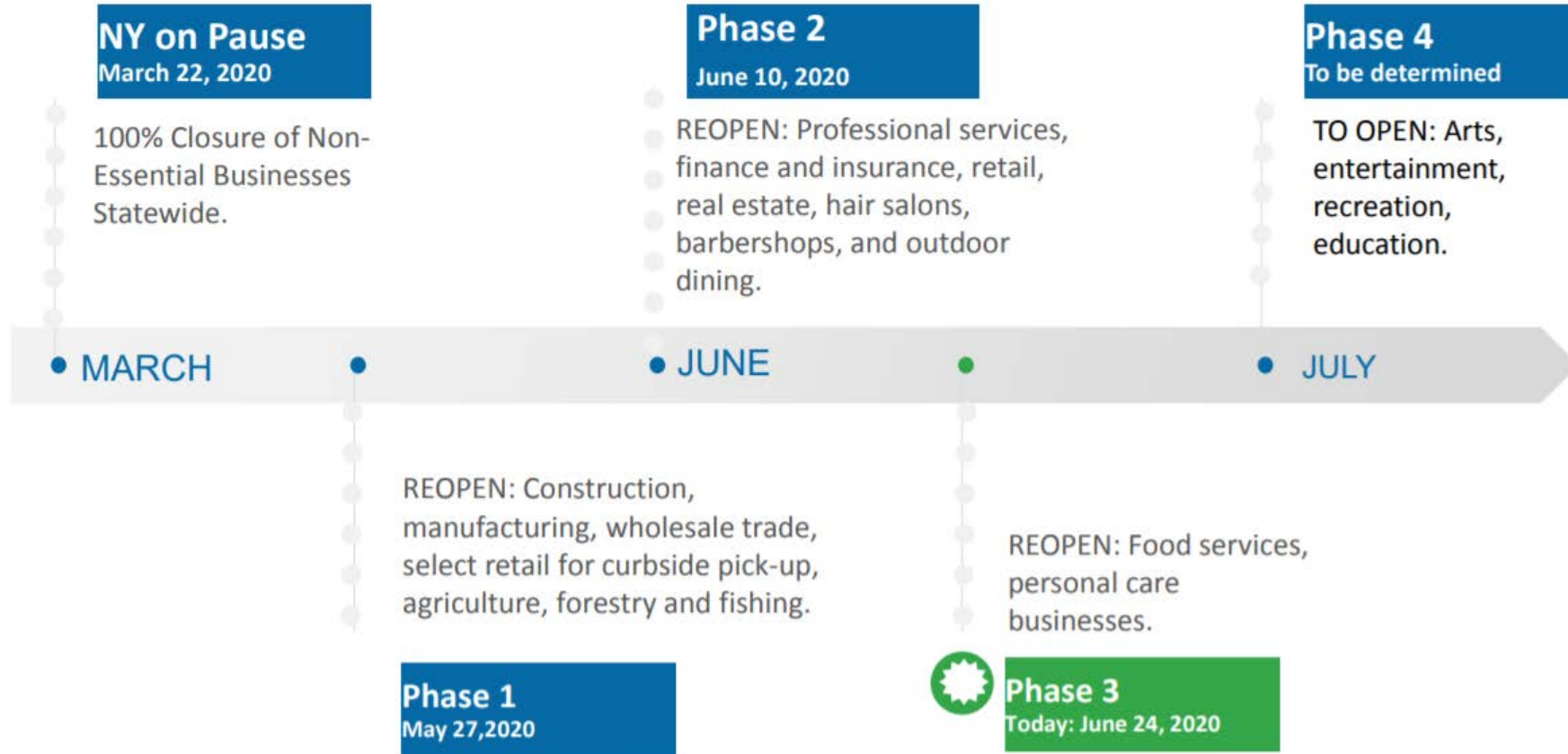


# COVID-19

## Electric Sales Analysis by Sector and Industry

JULY 28TH 2020

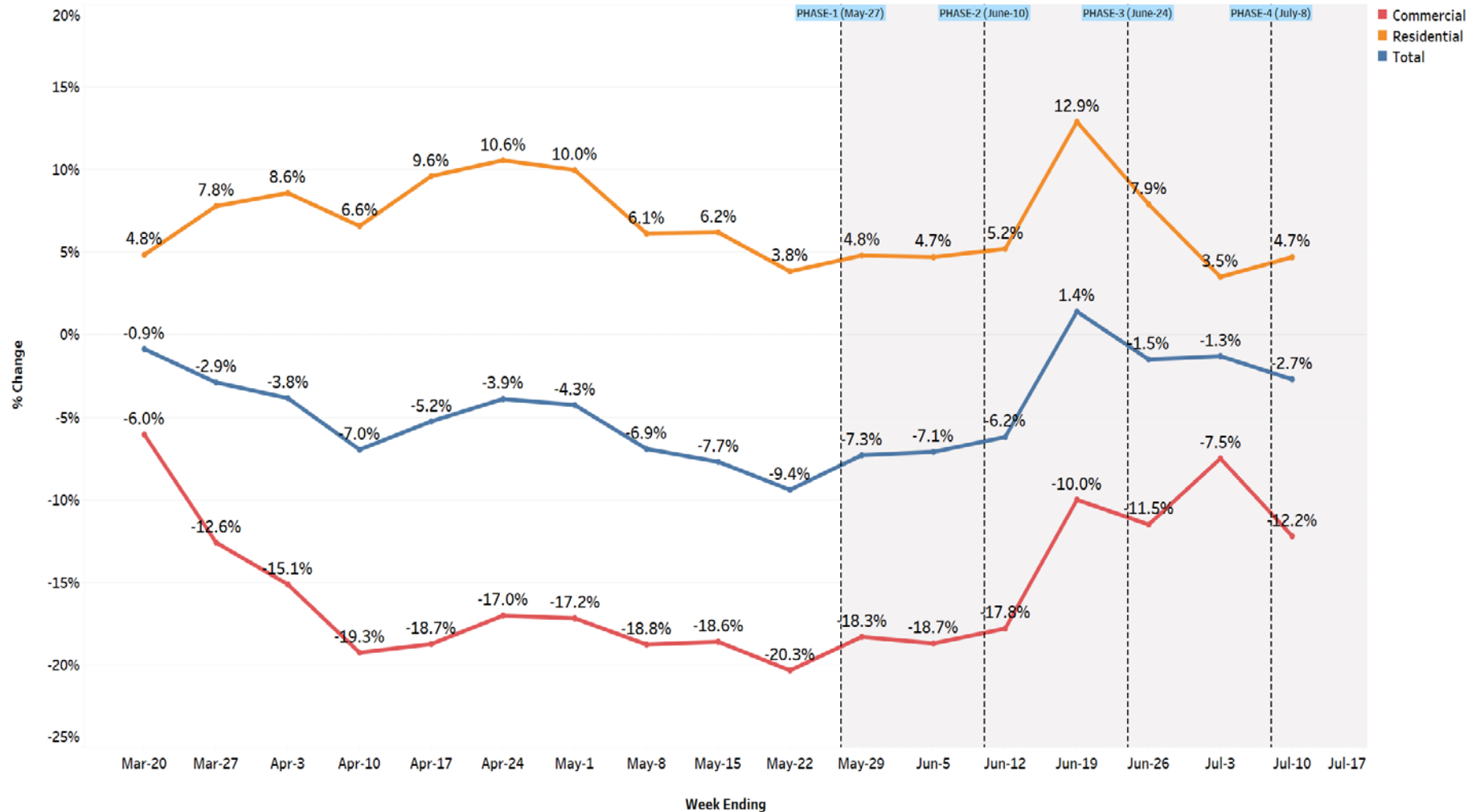
# LONG ISLAND'S REOPENING TIMELINE



# Weekly Weather-Normalized Consumption Change by Sector

## % Change compared to the same week of 2019

WEEKLY PERCENTAGE CHANGE BY SECTOR



# Industry Analysis Overview

Year over Year comparison of weather normalized weekly consumption changes by industry type  
Results grouped by Phase and Supersector

Analysis based on commercial accounts with:

- High-confidence NAICS code match
- AMI data in 2019 and 2020

## Phase Definitions

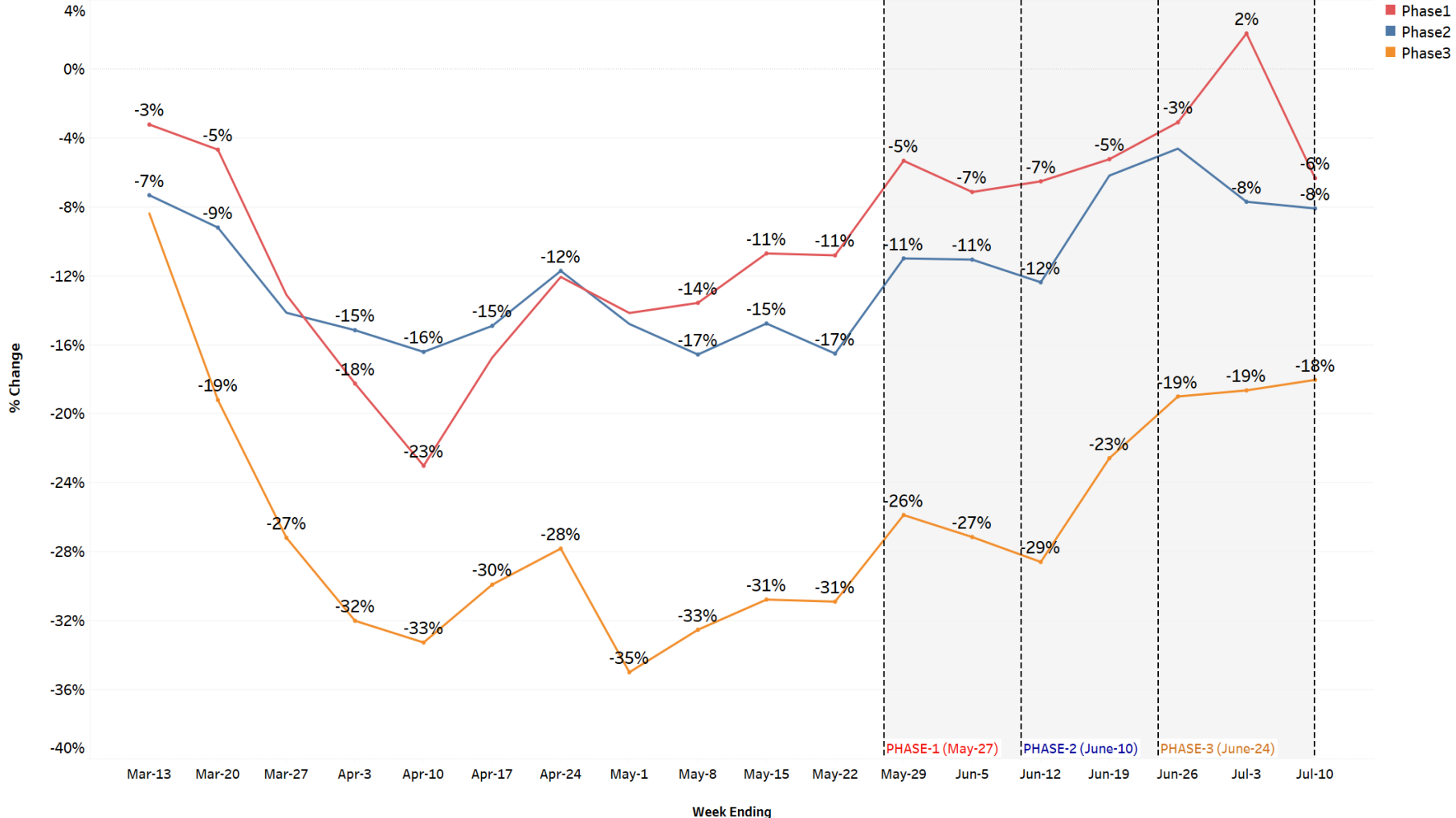
Phase 1	Phase 2	Phase 3
Manufacturing Construction Wholesale Trade	Retail Trade Prof. & Technical Services Finance and Insurance Real Estate Barber Shops/Hair Salons	Food Services & Drinking Personal Care

Of the three phases, Phase 2 industries are the larger driver of Long Island load.

# Weekly Weather Normalized Consumption Change by Phase

## % Change compared to the same week of 2019

WEEKLY WEATHER NORMALIZED PERCENTAGE CHANGE BY PHASE



**Phase 1:**  
 Manufacturing  
 Construction  
 Wholesale Trade

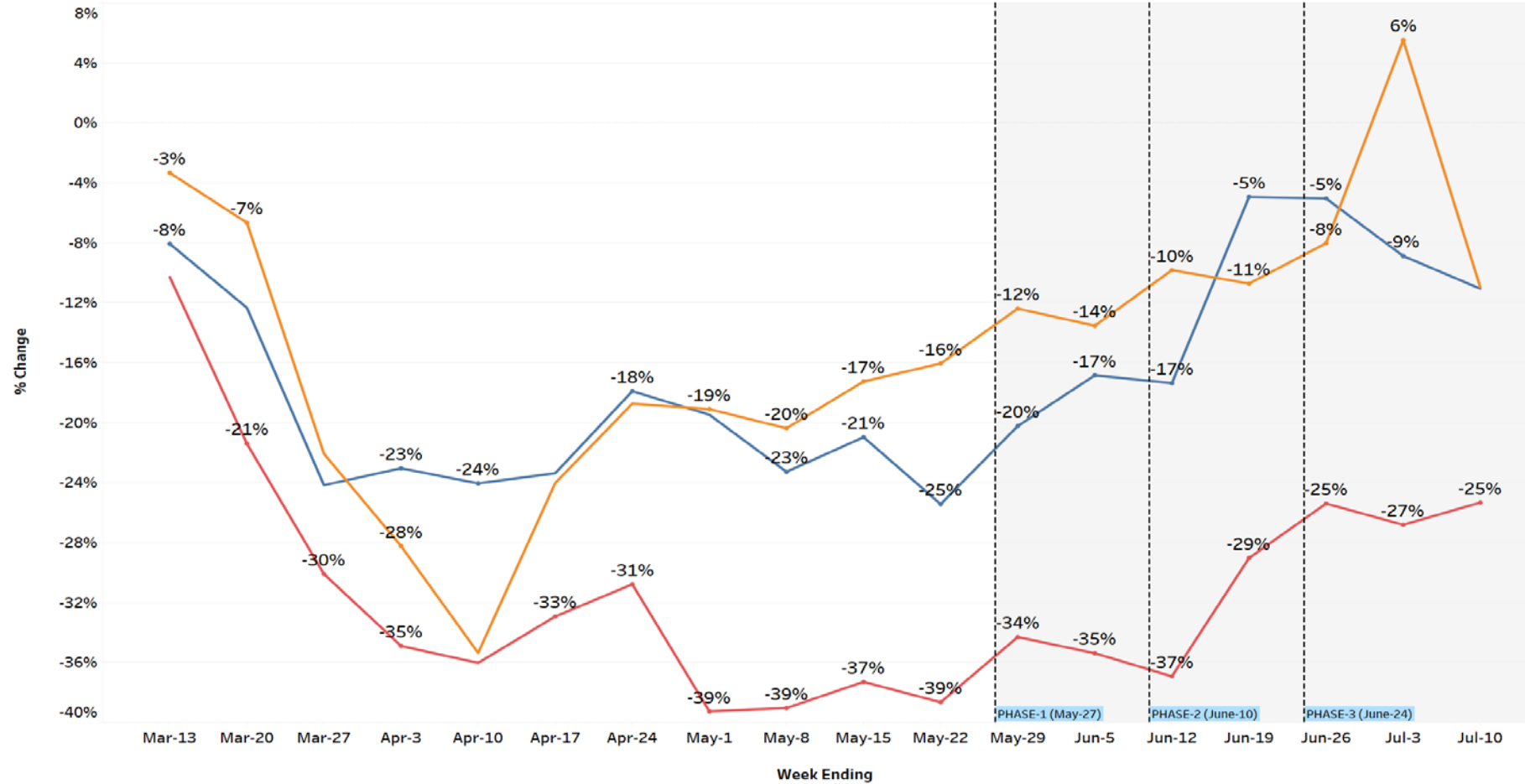
**Phase 2:**  
 Retail Trade  
 Prof. & Technical Services  
 Finance and Insurance  
 Real Estate  
 Barber Shops/Hair Salons

**Phase 3:**  
 Food Services & Drinking  
 Personal Care

# Industry Spotlight- Manufacturing, Retail Trade and Leisure & Hospitality

Weekly Weather Normalized Consumption Change  
 % Change compared to the same week of 2019

WEATHER-NORMALIZED WEEKLY PERCENTAGE CHANGE BY INDUSTRIAL SECTOR



- Leisure and Hospitality Sector
- Manufacturing Non-Essential
- Retail Trade Non-Essential